



## SOCIAL VALUE REPORT

---

### Centre 10

An insight into how we are achieving our social value goals through performance, progress, and impact monitoring as we strive to create opportunities and change lives.



# CONTENTS

- 01 FOREWORD
- 02 GROUP OVERVIEW
- 03 OUR UNIQUE SUPPLY CHAIN
- 04 OUR IMPACT
- 05 OUR PEOPLE
- 06 OUR PARTNERSHIPS



# 01 FOREWORD

Sovini Construction proudly refurbished Centre 10, a project which delivered five residential units for a local charitable organisation, in partnership with our client One Vision Housing.

The property, located in the Liverpool City Region, was designed with energy efficiency in mind, reducing running costs for residents and supporting our Net-Zero Carbon Commitment.

As a proud partner of The Sovini Group, we deliver an end-to-end solution for clients through our integrated supply chain.

The social value report demonstrates the positive impact generated by the Centre 10 project and how this supports our vision of creating a better future for our residents, clients and the communities we serve.



## James Flannery

Director of Construction and Land  
at The Sovini Group





# 02 GROUP OVERVIEW

The Sovini Group provides high quality construction, property and facilities services to the public, not-for-profit and private sectors, with a unique end-to-end supply chain.

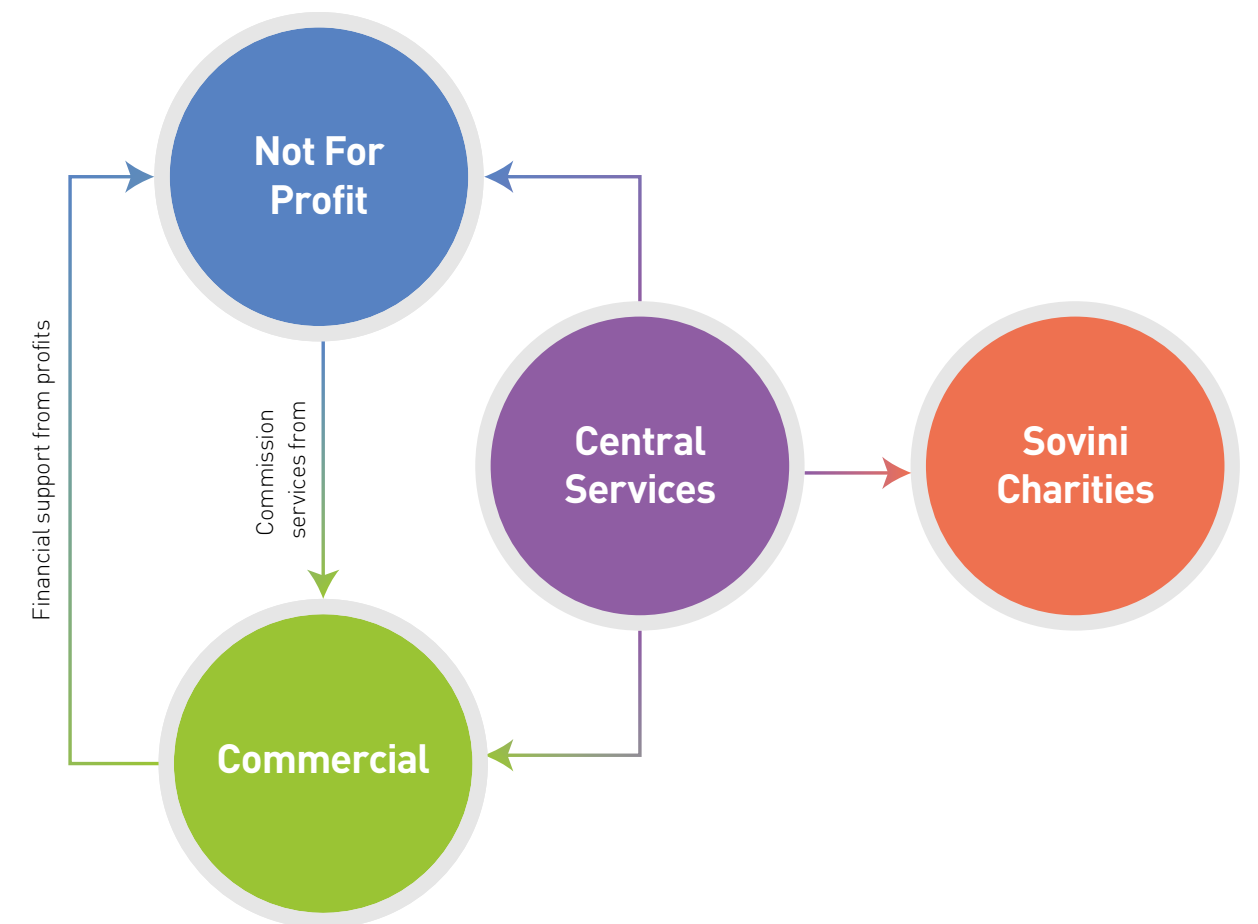
The Sovini Group's commercial activities complement and support the social and not-for-profit businesses, with profits reinvested to build new homes, improve service delivery, and support the communities who remain centric to everything the Group does.

At present the Group owns and manages in excess of 14,000 homes, rising annually through an active development programme.

The Sovini Group is a key contributor to the social, environmental and economic future growth of the North West.



## Our Unique Group Model Outlined:



● One Vision Housing  
Pine Court Housing Association

● Sovini Property Services  
Sovini Trade Supplies  
Sovini Waste  
Sovini Land Acquisition  
Sovini Construction  
Amianto Services  
Teal Scaffold

● Sovini Charities

● IT  
Governance  
Policy  
Procurement  
Finance  
Marketing & Communication  
People & Learning  
Performance  
Health & Safety  
Customer Empowerment  
Quality & Environmental

# 03 OUR UNIQUE SUPPLY CHAIN

We are proud partners of industry leading organisations within the built environment, who share our commitment in driving industry change and providing social value. →



Independent builder’s merchants supplying quality products to repairs, maintenance and construction companies throughout the UK.



Specialist maintenance providers who offer a single contractor approach to repairs, maintenance, estate management and compliance.



Offering a high quality and reliable commercial scaffolding service to all sectors and industries.



Provide passive fire protection services and licensed asbestos removal and disposal across the UK.



Provide a circular economy service including the full spectrum of waste management services, from skip hire and waste disposal to management reports and site consultation.



# 04 OUR IMPACT

The Centre 10 development saw the refurbishment of a derelict building by Sovini Construction, creating five energy efficient apartments in the Liverpool City Region with an EPC rating of C+.

The 36-week project which began in January 2023 saw customers moving into their safe and sustainable new homes from September 2023.



*The positive impact the Centre 10 project has had on the lives of its residents has been significant, and we are proud to have delivered safe and secure homes.*

*Working collaboratively with Group partners Sovini Construction to complete the restoration project for a local charitable organisation supports our shared vision to create a better future for customers and communities.*

**Suzanne Meylan**, Head of Independent Living for client One Vision Housing



Centre 10	No	Local %
Business	12	92%
Workforce	67	97%
Impact Area	Value	
Social	£1.26m	Non Cashable
Economic	£545k	Cashable
Environmental	£2.5k	Non Cashable
	£1.81m	Combined Impact

\*Local is considered to be from Liverpool City Region, Lancashire or Greater Manchester, Impact values are aligned with nationally recognised local economic Indicators and Social Return on Investment methodology.

The development of the Centre 10 project has had a significant impact on our colleagues, customers and communities, generating over £1.8m in Social Impact Value.

 **£1.81M**  
SOCIAL IMPACT VALUE CREATED

 **£746K**  
DEVELOPMENT SPEND

 **£2.42**  
SOCIAL RETURN ON INVESTMENT



**Social Impact**

Social impact through the creation of employment, training and education opportunities resulted in an impact value of **£1.26M**



**Economic Impact**

Economic impact established through the use of a local supply chain and workforce (where possible) resulted in an impact value of **£545K**



**Environmental Impact**

Environmental impact established through the projected year one savings on energy consumption resulted in the delivery of an impact value of **£2.5k**



# 05 OUR PARTNERSHIPS

We believe that we achieve success through collaboration and endeavour to partner with like-minded organisations as we strive to create a better future.

Through business analysis we can demonstrate:

- The businesses who collaboratively delivered the project
- The business locations
- A breakdown of the spend by business

REGIONAL BREAKDOWN	
67%	LIVERPOOL CITY REGION
17%	LANCASHIRE
16%	OTHER

BUSINESSES	
12	BUSINESSES
11	LOCAL BUSINESSES
67%	LIVERPOOL CITY REGION

SPEND	
£746K	TOTAL SPEND
£726K	SPEND WITH LOCAL BUSINESSES
£545K	LOCAL BENEFIT



# 06 OUR PEOPLE

We proudly create opportunities for talented individuals from the Liverpool City Region and beyond.

67 individuals worked collaboratively to deliver the project with 65 (97%) classed as being local to the development.

REGIONAL BREAKDOWN OF WORKFORCE	
70%	LIVERPOOL CITY REGION
25%	LANCASHIRE
5%	OTHER







## Success

We Will Be The Best



## Authenticity

We Do What We Say We Will Do



## Passion

We Love What We Do



## Courage


We Dare To Be Different




## Enterprise

We Never Stand Still

 [sovini.co.uk/construction](https://sovini.co.uk/construction)

 [Info.construction@sovini.co.uk](mailto:Info.construction@sovini.co.uk)

 0151 523 2277

